

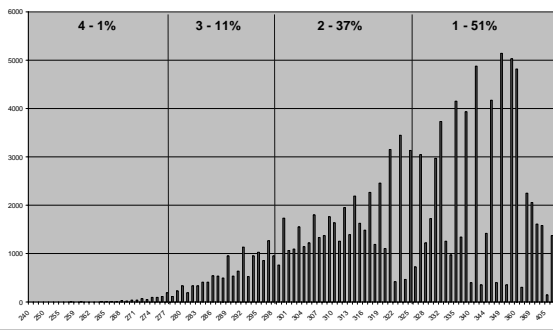
2006 MEAP Grades 3-8

Frequency Distributions
and
Item P-Values

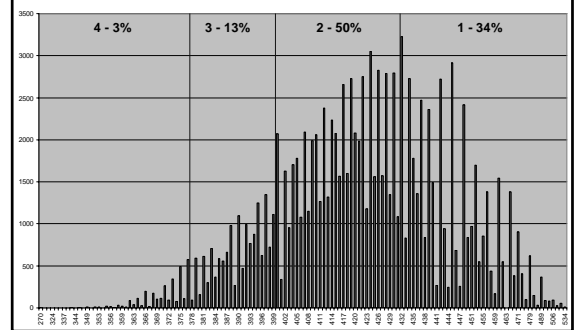
2005 MEAP Mathematics Levels

Grade	Level 4 Apprentice	Level 3 Basic	Level 2 Met Standards	Level 1 Exceeded Standards
3	179 - 278	279 - 299	300 - 326	327 - 400
4	252 - 377	378 - 399	400 - 431	432 - 524
5	335 - 476	477 - 499	500 - 526	527 - 654
6	449 - 579	580 - 599	600 - 621	622 - 742
7	546 - 675	676 - 699	700 - 721	722 - 841
8	636 - 783	784 - 799	800 - 819	820 - 952

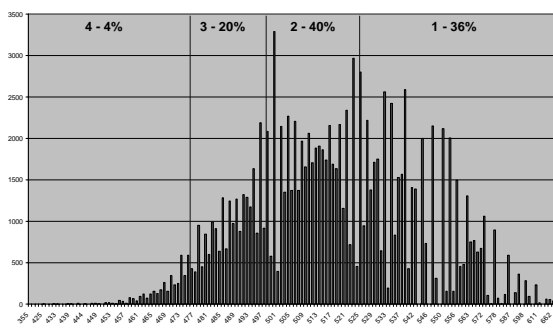
2006 MEAP Grade 3



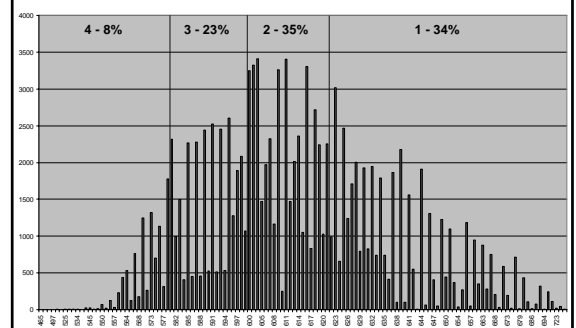
2006 MEAP Grade 4



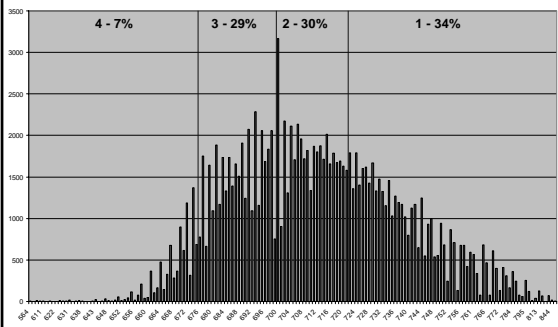
2006 MEAP Grade 5



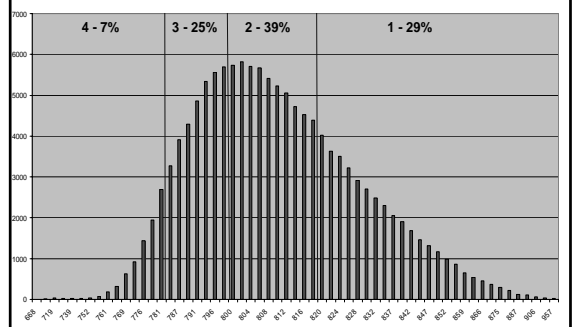
2006 MEAP Grade 6



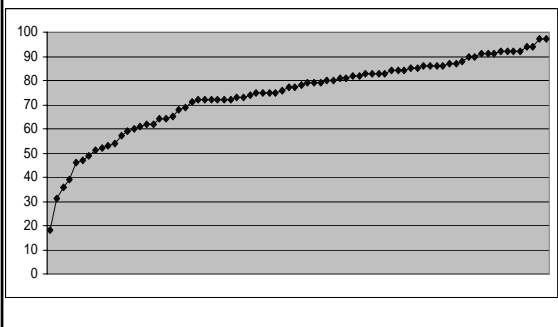
2006 MEAP Grade 7



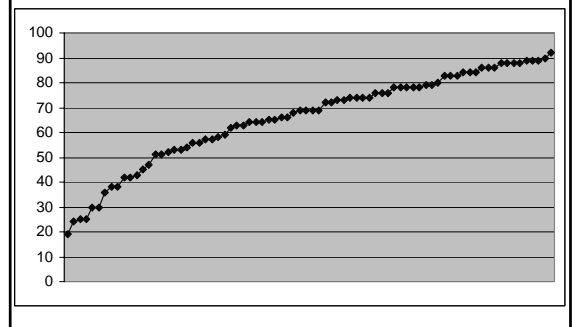
2006 MEAP Grade 8



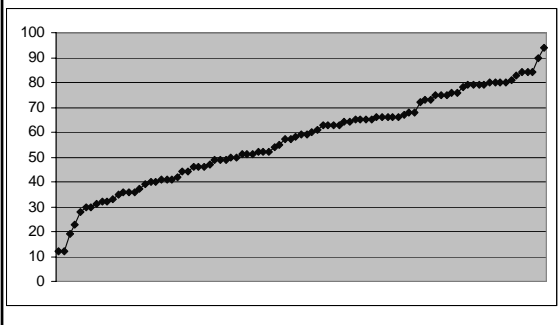
2006 MEAP Grade 3



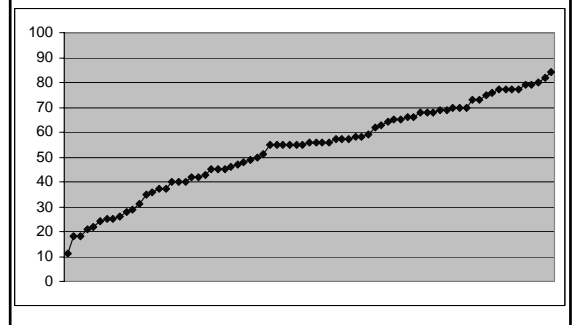
2006 MEAP Grade 4



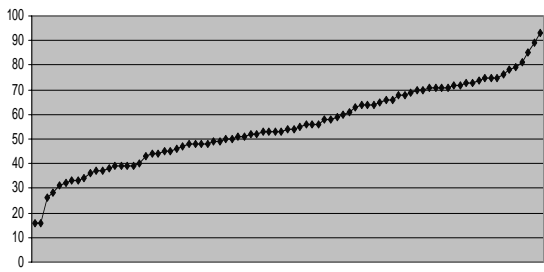
2006 MEAP Grade 5



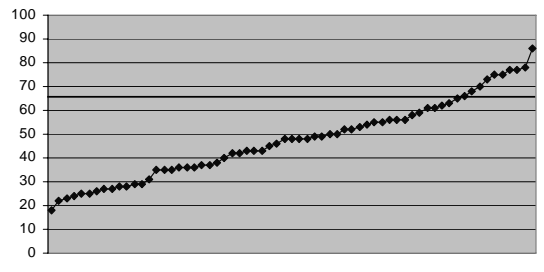
2006 MEAP Grade 6



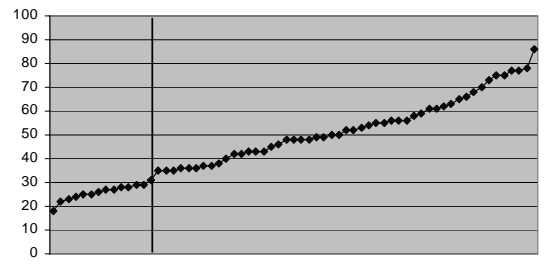
2006 MEAP Grade 7



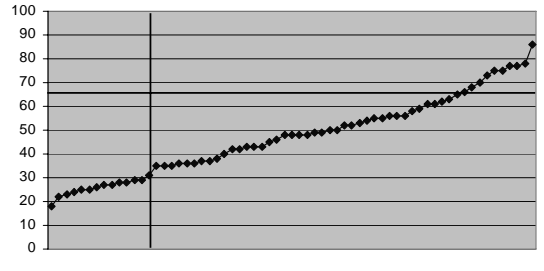
2006 MEAP Grade 8



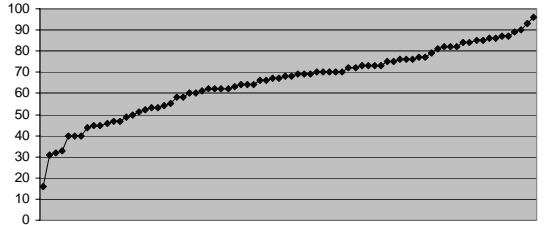
2006 MEAP Grade 8



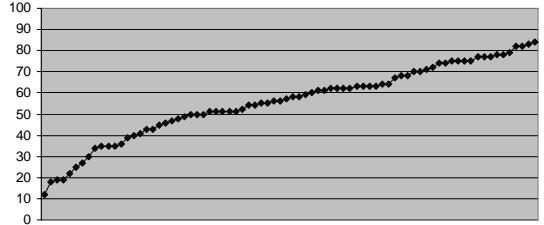
2006 MEAP Grade 8



2006 MEAP Grade 3 (SWD)

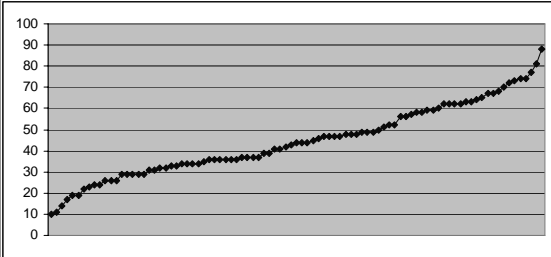


2006 MEAP Grade 4 (SWD)

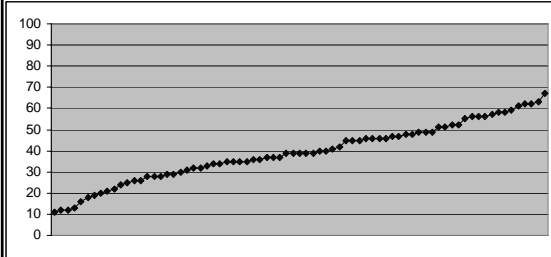


MICHIGAN MATHEMATICS PROGRAM IMPROVEMENT (MMPI)

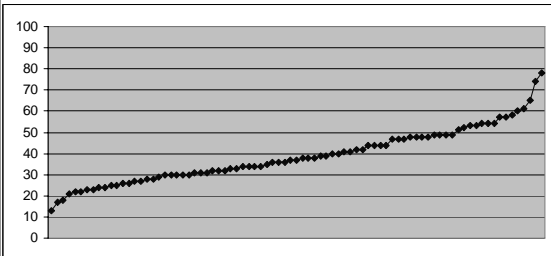
2006 MEAP Grade 5 (SwD)



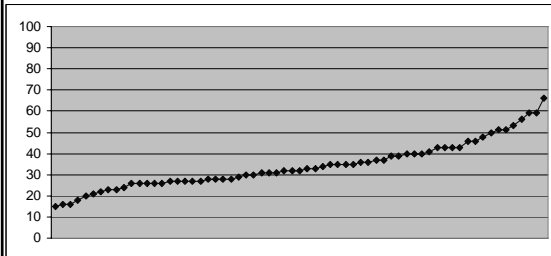
2006 MEAP Grade 6 (SwD)



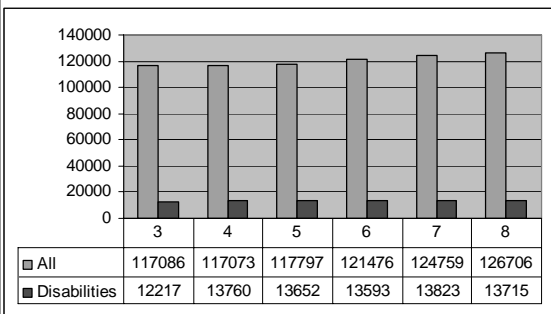
2006 MEAP Grade 7 (SwD)



2006 MEAP Grade 8 (SwD)



2006 MEAP Participation



238,327 Michigan Students Served Through IDEA
13.9% of total student population (12/1/02)

Specific & Learning Disability	40.5
Speech & Lang. Impairment	24.4
Cognitive Impairment	11.4
Emotional Impairment	8.2
Physical & Other Health Imp.	6.9
Autism	2.7
Early Child. Dev. Delay	1.6
Severe Multiple Impairments	1.6
Hearing Impairment	1.4
Other Health Impairments	0.6
Visual Impairment	0.4
Physical Impairment	<0.4
Traumatic Brain Injury	<0.4